

Diocese of New Jersey
Disposition of Assets from Closed Congregations - Updated through December 31, 2012

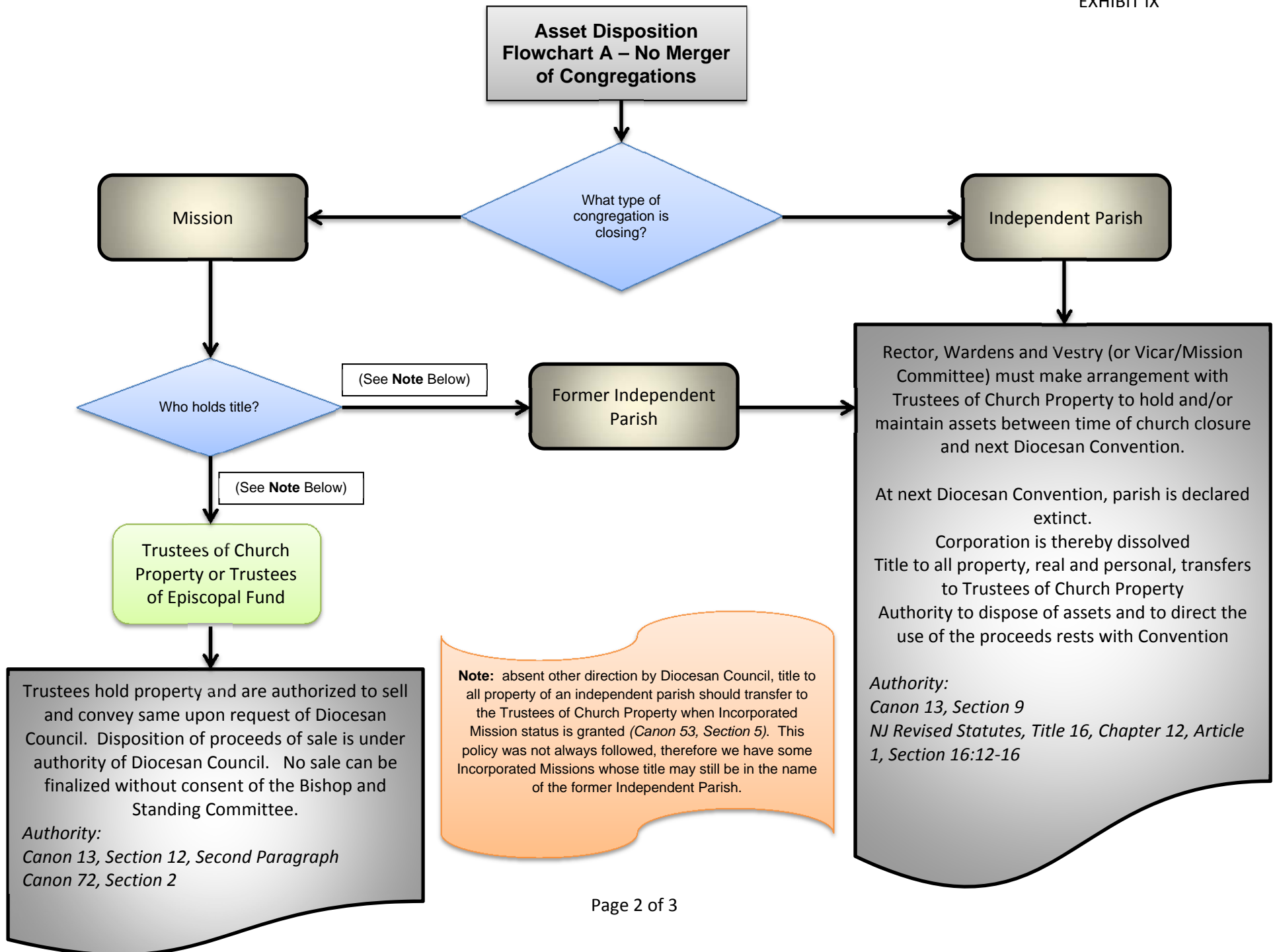
Code	Description	St. Andrew's Highlands	St. Mark's Carteret (Residual)	Christ Church Three Bridges (Residual)	Holy Trinity Delair	Holy Spirit Tuckerton	Our Saviour Camden	St. Andrew's Camden Repairs	St. Augustine's Camden Repairs	St. Paul's Camden Repairs	St. Wilfrid's Camden Repairs	St. Andrew's Trenton	Trinity Cathedral	Christ Magnolia/Collingswd	All Saints' Highland Pk	Grace Elizabeth	Holy Comm Fair Haven	St. Luke's Westville	St. Clement's Belford	Christ Vineland	St. George's Helmetta	GRAND TOTALS
	Exhibit Number (if applicable)	4	N/A	N/A	3	1	2	2	2	2	2	5		6	7	N/A	N/A	N/A	NA	NA	NA	
	GL Account/Worksheet Tab	2768			2776	2778	2775				2774	2766		2785		2783	2781	2787	2779	2778		
Sources of Funds																						
PS	Proceeds from Building Sales ¹	270,015.98	45,000.00		217,258.40	728,154.60	166,630.73							409,092.92	588,353.27							2,424,505.90
	Dividends from DIT Account	46,868.46				13,620.32	4,411.66															64,900.44
PAL	Transfers in ²					407,328.40		58,218.00	20,750.00	16,000.00	12,475.00		150,000.00									664,771.40
CPR	Congregational Fundraising					115,000.00																115,000.00
ID	Investment Funds ³						57,383.04										13,016.16					70,399.20
R	Rental Income	4,088.00										32,825.00					11,000.00	3,500.00				51,413.00
IO	Other Income	3,117.89		34,885.97		6,877.24	1,090.55					100.12				69,383.27	50.00			5,463.34	59,422.70	180,391.08
Total Sources of Funds		324,090.33	45,000.00	34,885.97	217,258.40	1,270,980.56	229,515.98	58,218.00	20,750.00	16,000.00	12,475.00	32,925.12	150,000.00	409,092.92	588,353.27	69,383.27	24,066.16	3,500.00	0.00	5,463.34	59,422.70	3,571,381.02
Uses of Funds																						
PP	Property Purchases					-1,269,480.56																-1,269,480.56
	Carrying Costs																					
I	Insurance	-2,505.00			-4,285.11		-28,070.48				-8,927.00	-18,146.75			-2,003.00	-2,092.46	-18,767.32	-3,550.97		-397.72		-88,745.81
P	Pension Fund Payments						1,208.22															1,208.22
U	Utilities	-3,714.21			-6,099.58		-5,759.75					-22,784.81			-11,072.46	-9,782.49	-26,192.50	-8,015.82	-1,996.46	-622.43		-96,040.51
T	Taxes						-7,187.09					-31,191.42				-19,586.01		-25,176.59				-83,141.11
	Construction/Renovation/Repair						-8,337.00	-58,218.00	-104,000.00	-16,000.00	-79,000.00	-5,461.38	-100,000.00	-409,092.92				-10,000.00				-790,109.30
M	Maintenance & Minor Repair (grass cutting)	-1,250.00			-4,199.44		-2,079.58					-1,455.64			-11,256.92	-2,005.00	-6,643.50	-1,745.00	-300.00			-30,935.08
L	Legal Services				0.00		-4,602.00															-4,602.00
S	Sales Related Expenses	-2,847.58			-1,200.00	-1,500.00									-1,200.00	-16,933.17	-2,325.91	-3,200.00		-3,000.00		-32,206.66
O	Other	-897.66		-10,555.84							-1,412.00	-3,211.77					-21.20					-20,168.57
LPO	Loan Payoff	-20,799.92											-50,000.00				-1,347.75					-72,147.67
	Total Carrying Costs	-32,014.37	0.00	-10,555.84	-15,784.13	-1,500.00	-58,897.78	-58,218.00	-104,000.00	-16,000.00	-89,339.00	-82,251.77	-150,000.00	-409,092.92	-25,532.38	-50,399.13	-55,298.18	-51,688.38	-2,296.46	-4,020.15	0.00	-1,216,888.49
	Transfers out ⁴	-291,010.95	-45,000.00	0.00	-121,317.45	0.00	-107,443.00					-100,000.00										-664,771.40
Total Uses of Funds		-323,025.32	-45,000.00	-10,555.84	-137,101.58	-1,270,980.56	-166,340.78	-58,218.00	-104,000.00	-16,000.00	-89,339.00	-182,251.77	-150,000.00	-409,092.92	-25,532.38	-50,399.13	-55,298.18	-51,688.38	-2,296.46	-4,020.15	0.00	-3,151,140.45
Excess/(Deficit) of Sources over Uses		1,065.01	0.00	24,330.13	80,156.82	0.00	63,175.20	0.00	-83,250.00	0.00	-76,864.00	-149,326.65	0.00	0.00	562,820.89	18,984.14	-31,232.02	-48,188.38	-2,296.46	1,443.19	59,422.70	420,240.57
	Camden Church Repair Reallocations				-80,156.82		-71,512.20		83,250.00		68,419.02											0.00
Net Excess/(Deficit) of Sources over Uses		1,065.01	0.00	24,330.13	0.00	0.00	-8,337.00	0.00	0.00	0.00	-8,444.98	-149,326.65	0.00	0.00	562,820.89	18,984.14	-31,232.02	-48,188.38	-2,296.46	1,443.19	59,422.70	420,240.57

¹Proceeds from Building Sales for Our Saviour, Camden reflects the sale of the church that was reflected as revenue in the 2006 GL and closed into the equity account.

²Transfers in/Account Liquidations in Holy Spirit, Tuckerton includes the DIT redemption from St. Mark's, Carteret, the DIT redemption from St. Andrew's, Highlands, and Transfer from Sale of Holy Trinity, Delair.

³Investment Funds for Our Saviour, Camden represents the gross proceeds from the James W. J. Davis Estate.

⁴Transfers out for Holy Spirit, Tuckerton represents the sale of the church which was never reflected in the GL since it was directly wired for the purchase of St. Theresa's.



Asset Disposition Flowchart B – Merger of Congregations

